

A Game Changer for Intraoral Sensor

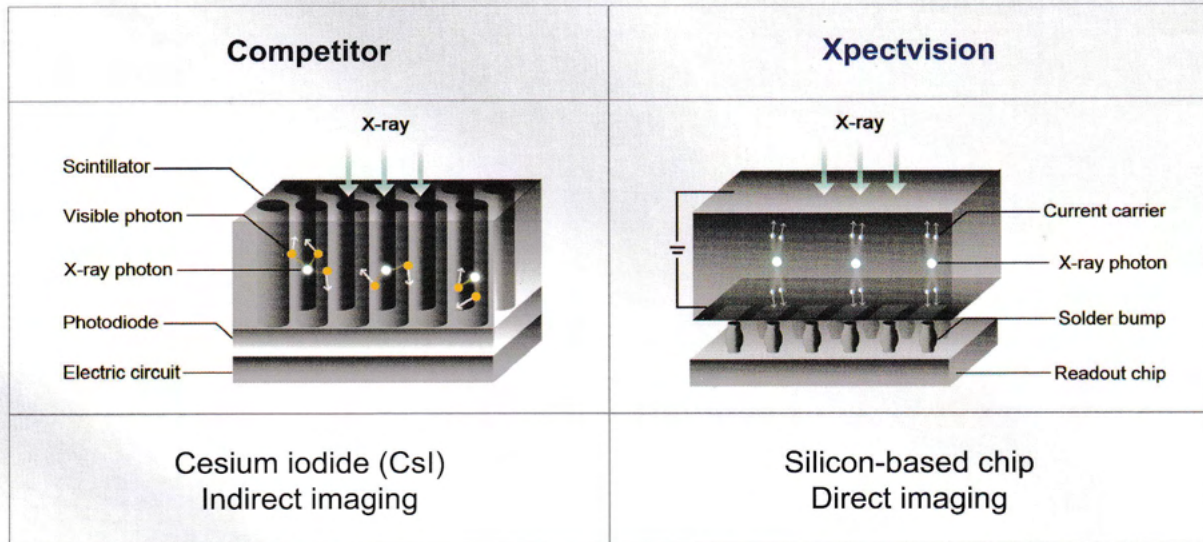
Make dental X-ray more accessible to dentists worldwide



The world's first photon-counting x-ray intraoral sensor.

Cutting Edge Technology and Strict Tests Deliver Unrivaled Durability

The Xpectvision intraoral sensor uses silicon-based chips instead of the traditional material, cesium iodide (CsI), avoiding image blurring or performance deterioration.



Sensor Tested to 500,000+ Exposures

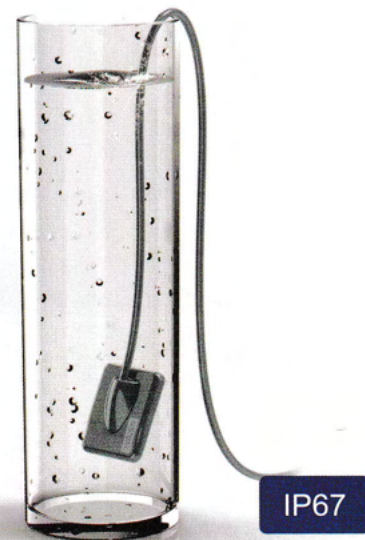
Guarantee longer life span

Cable Strength and Durability

100,000+ cable bending tests and pull strength to withstand forces of up to 10kg.

Water Resistance Tested to IEC IP67

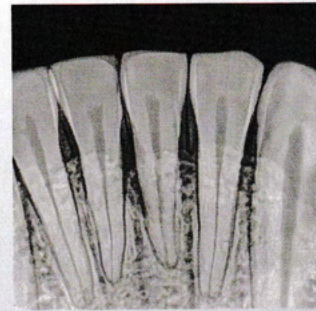
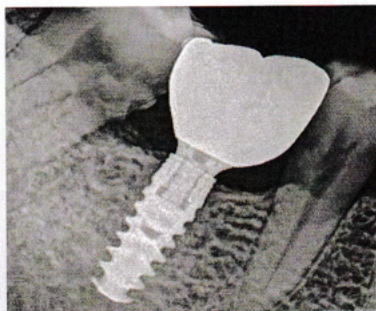
The impact-resistant sensor case is sealed to withstand submersion in 3ft of water for 30 minutes.



Xpectvision's Direct Imaging Innovation Provides Unparalleled Clinical Image Quality

Of its high technical requirements and costs, photon-counting is an emerging technology in clinical CT. Xpectvision is the world's first to apply the latest photon-counting technology to dentistry, enabling direct imaging, avoiding the interference of light scattering from conventional indirect imaging, and ensuring image acquisition stability.

The broad dynamic range eliminates time-consuming fine-tuning of exposure to produce a clinical image. Adjust contrast and brightness to meet different clinical requirements.

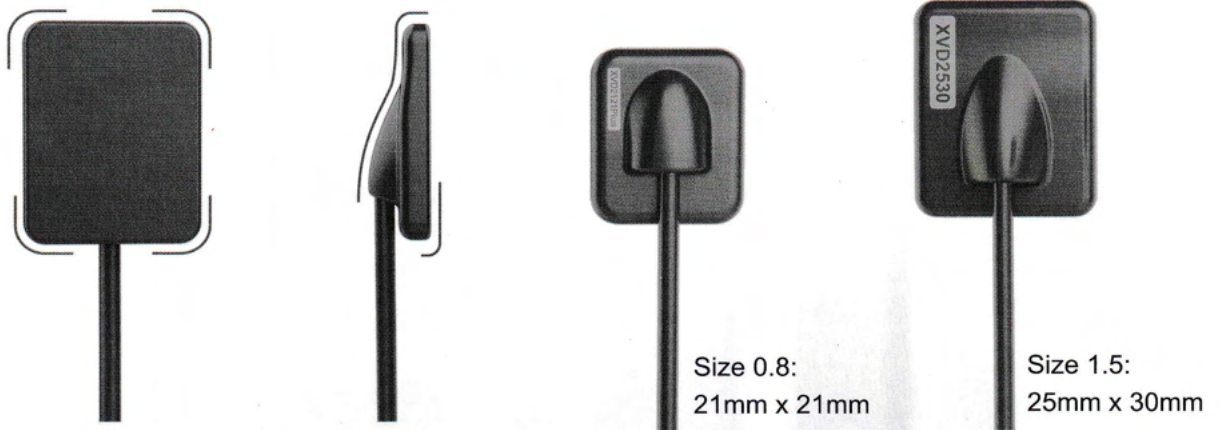


Ergonomic Design to Maximize Patient Comfort

One of the Thinnest X-Ray Sensors in the Market

The sensor comes in 2 sizes for both adults and children, better meeting different clinical requirements. To better improve the diagnosis experience of patients, the Xpectvision sensor has a more compact design while guaranteeing an adequate sensor area.

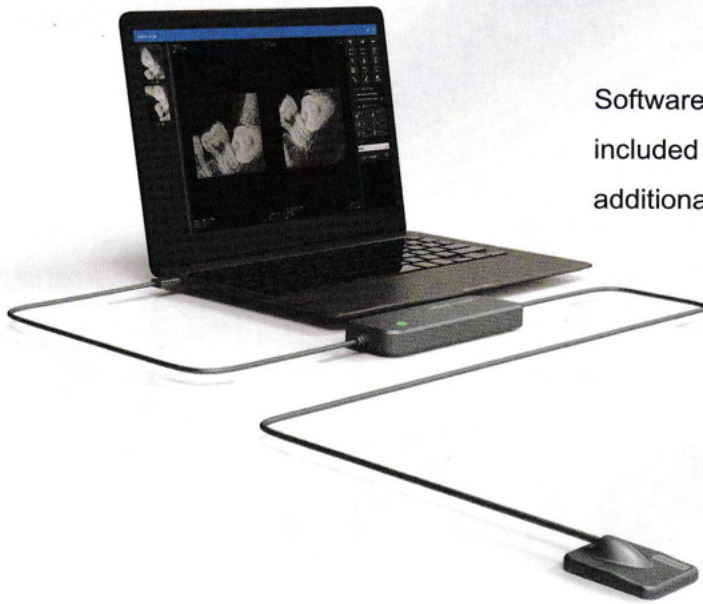
Sensor positioners help with quick positioning, significantly reducing patients' discomfort and improving diagnostic efficiency.



2-Year Warranty

Value-added Service

Xpectvision offers a 2-year warranty for intraoral sensors. If a device malfunction occurs with typical use, Xpectvision will provide replacements for free.



Software upgrades and customer support is included with each intraoral sensor at no additional charge.

Xpectvision Intraoral Sensor Accessories



Sensor holder



Disposable sleeves

Technical specification

Neuer Weg 16

63853 Mömlingen, Germany

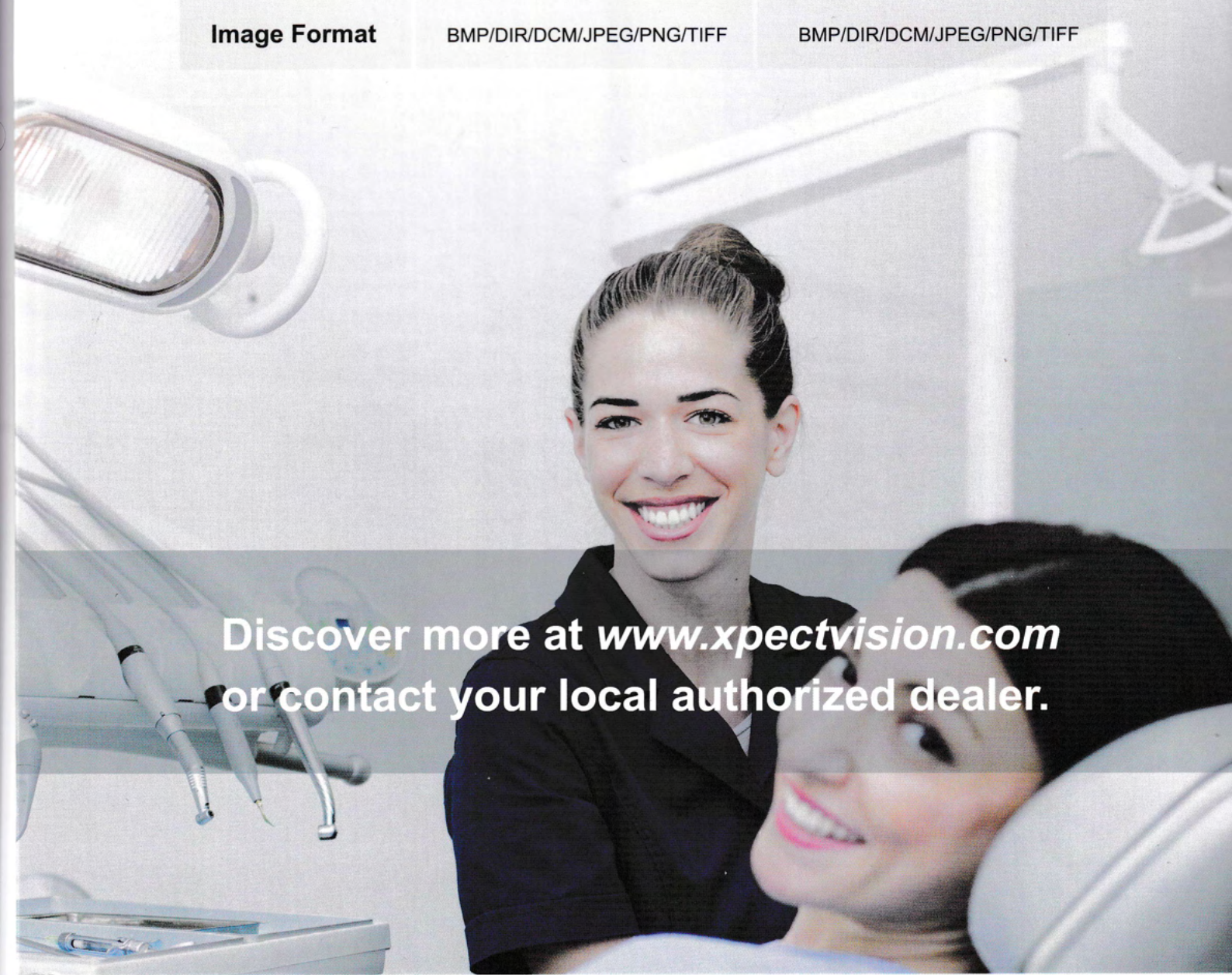
Mobile +49 176 767 237 43

ud@dohle-roentgenservice.de

www.dohle-roentgenservice.de



Specifications	XVD2121 Plus	XVD2530
Grayscale	65,536 gray level(16 bit)	65,536 gray level(16 bit)
Imaging Area	21*21 mm ²	25*30 mm ²
Sensor Area	26.5*32 mm ²	30*37 mm ²
Thickness	5 mm	5 mm
Image Format	BMP/DIR/DCM/JPEG/PNG/TIFF	BMP/DIR/DCM/JPEG/PNG/TIFF



Discover more at www.xpectvision.com
or contact your local authorized dealer.