



# Real Arch Specifications

## Specifications

Tip size (W × H)	19.8 mm × 17.8 mm (relative tolerance ± 5 %)	Precision	≤ 20µm
Dimension (L × W × H)	241 mm × 42.2 mm × 57.5 mm (with tip)	Data output	STL, PLY, OBJ
	149 mm × 42.2 mm × 57.5 mm (without tip)	Anti-fogging	Fan type
Weight (with tip)	230 g (relative tolerance ±10 %)	Scanning Technology	Optical Triangulation
Field of view	14.8 mm × 14.4 mm	Coloring	3D Full color, Mono
Depth of field	30 mm	Scan Tip Sterilization	Autoclavable

## Laptop Specifications

CPU	i7-10750 or higher	GPU	NVIDIA GTX 1660Ti or higher
RAM	16 GB or higher	OS	Windows 10 64 bit

## Package List



HDXWILL Headquarter   HDXWILL Branch Office   Distributor

Distributor



3F Taiwha building, 29, Insadong 5-gil,  
Jongno-gu, Seoul, Republic of Korea  
www.hdxwill.co.kr/en | global@hdx.co.kr



## Initiate Digital Dentistry



# SPEEDY AND AFFORDABLE



The compact and lightweight 230g body ensures comfort for dentists and dental staffs



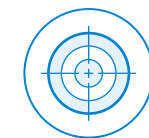
Fan-Type mirror anti fogging



Powder-Free scan for acceptable prosthesis scanning



Preheating is not required for scanning



The precision is  $\leq 20 \mu\text{m}$



HDXWILL's User-Friendly and Easy-to-Learn program software



Check for accuracy and reliability at chairside



File export by STL, PLY and OBJ files



With a minimum tip size of 17.8 mm, the small scan tip enables scanning the distal area of the second molar



Provides 3D full color and monochrome scanning options

# Real Arch Software



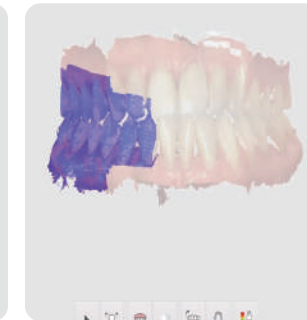
Automatic Soft Tissue Filtering



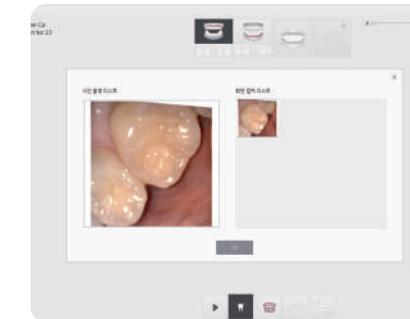
Versatile Usability for Dental Clinics



Fast and Accurate Scan Recognition



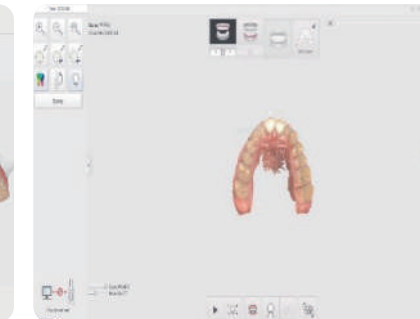
Easy & Quick Bite Registration



Oral Camera Capture During Scanning



User-Friendly Case Management



Easy-to-Learn Scanning Software