

***Patients
are willing to pay
for less pain!***



E-FLOW

Dental anesthesia delivery system

Patented Hydraulic Drive Technology

Painless Treatment



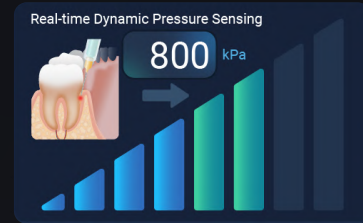
*High-precision sensor is used for more precise control, the injection pressure is just hydraulic pressure.



High-precision Liquid Control

While achieving precise drug delivery accuracy, you can also see the real-time remaining dose

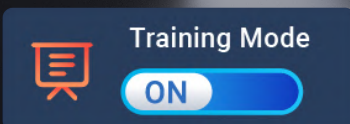
Real-time Dynamic Pressure



Reflecting the injection pressure based on the value and dynamic bar graph, of which dentists can adjust the operation to bring a painless and safe treatment

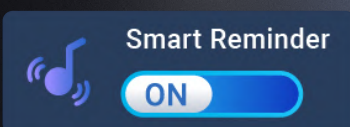


4.3 " Touch Screen



Thoughtful Training Mode

Provide additional voice reminders not available in the standard mode, help users quickly learn the proper operation



Smart Voice Reminder

Timely voice reminders under low anesthesia dose and high system pressure (in PDL mode)

4 injection modes, multiple options for effective pain relief



PDL Mode (periodontal ligament)

Automatic injection can be selected in this mode

Dosage Mode

Free choice of injection dose,
making the injection more stable and precise



HANDPIECE



• **Autoclavable Container**
Prevent cross-infection, safe and economical

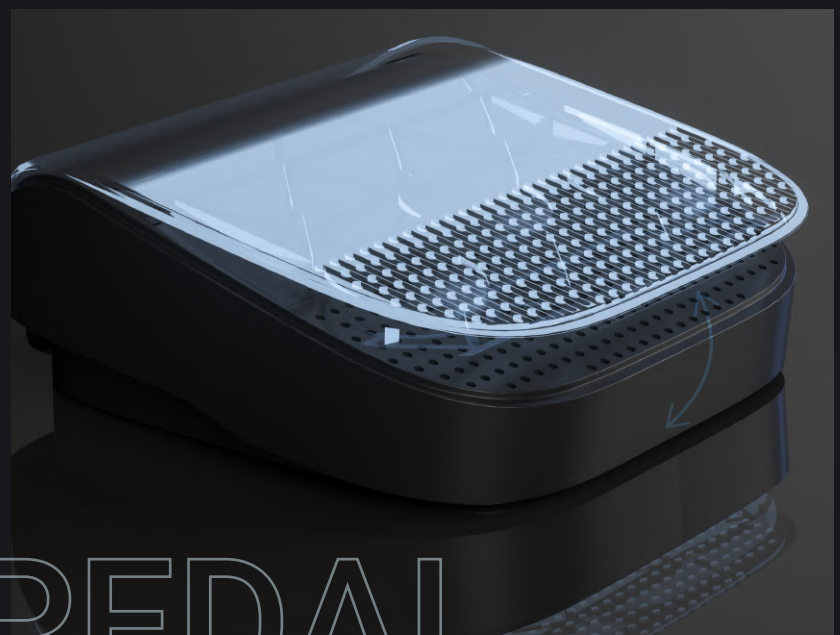


• **Aspiration**
Prevent swelling and pain caused by excessive liquid

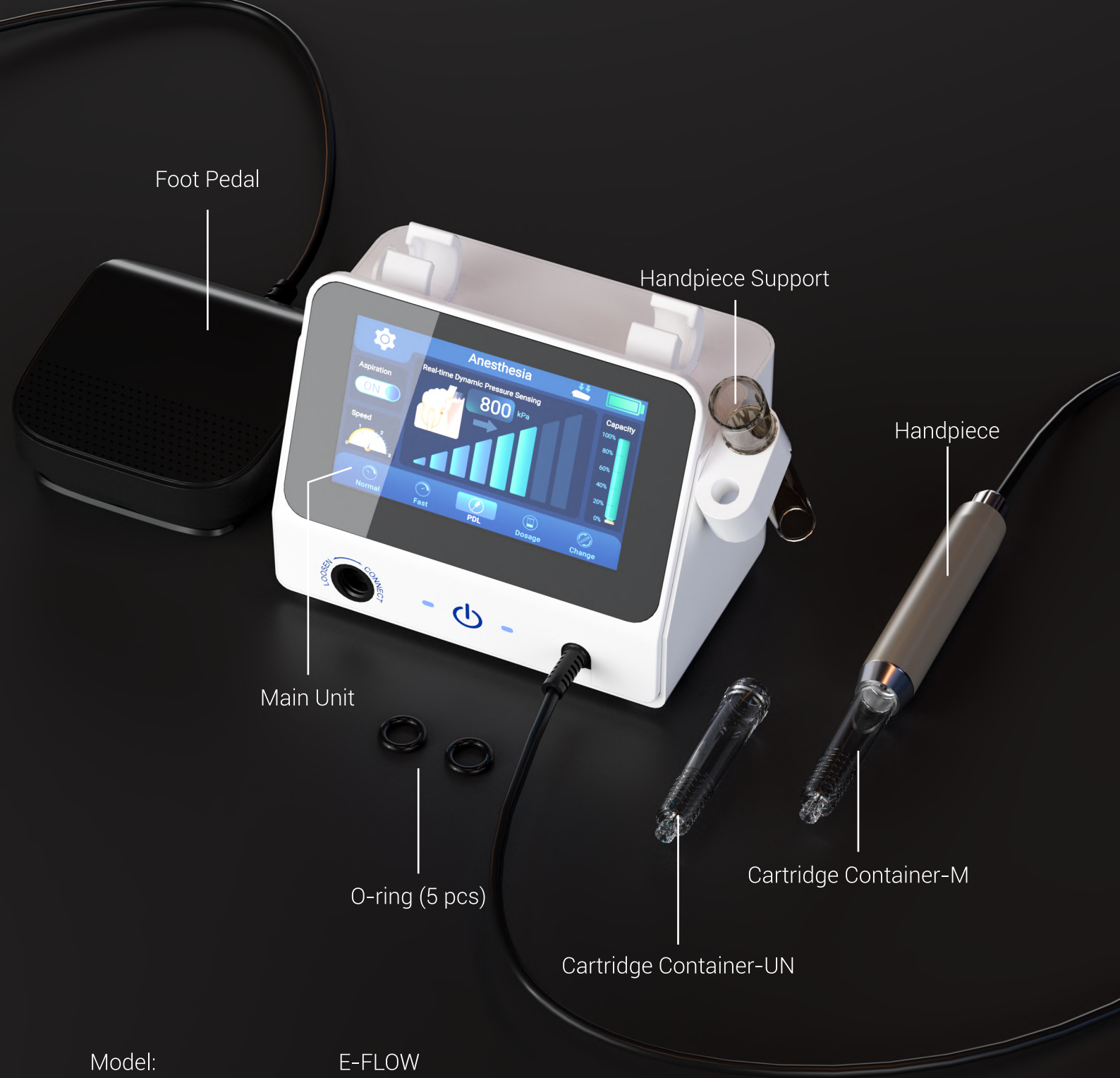
• **Lighter and Smaller**
Only weighs 40g, easier to operate

Intelligent Foot Pedal Control

The injection flow rate can be switched by pressing the foot pedal to the "front section" or "back section" of the stroke



FOOT PEDAL



Foot Pedal

Handpiece Support

Handpiece

Main Unit

O-ring (5 pcs)

Cartridge Container-UN

Cartridge Container-M

Model:	E-FLOW
Weight:	1.8kg±10%
Handpiece weight:	40g
Injection mode:	Normal, Fast, PDL, Dosage
Injection speed:	Slow (0.3ml/min) Medium (1.7ml/min) Fast (3.5ml/min)
Battery capacity:	2600mAh

SPECIFICATIONS